

# RF05075 鍊條及標準配件

● 以下提供本產品完整規格說明及訂購資訊

## 1 訂購資訊

標示例:

RF05075	R	SC	1L	A2	400L	JN
尺寸	滾子型式	材料規格	配件安裝型式	配件	鏈結數	尾端記號

## 2 規格資訊

資訊表:

### ● 產品重量參數總覽

尺寸 / SIZE	節距(P) mm	無配件重量(淨重-kg/m)			A配件重量(kg/個)
		S	R	F	
RF05075	75	4.1	6.0	6.2	0.7

## 3 材料係數

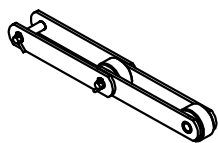
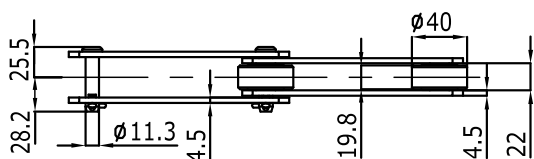
### ● 材料規格代號及抗拉強度

材料規格代號	SC(長備品)	SCZP	SCH	SCHZP	SS	SSH
鍊片	碳鋼HT	+電鍍鋅	合金鋼HT	+電鍍鋅	SUS304	SUS304
軸心、套管、滾子	合金鋼HT	+電鍍鋅	合金鋼HT	+電鍍鋅	SUS304	SUS410HT
最小抗拉強度 kgf	12000		15400		6600	6600

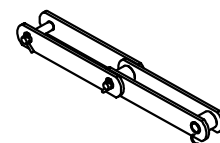
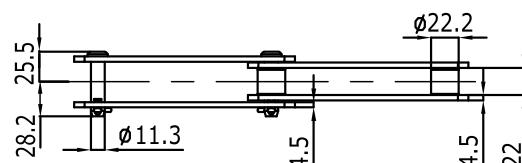
## 4 滾子形式

### ● R / S / F 型滾子(公制)

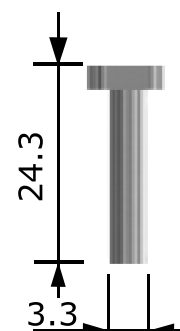
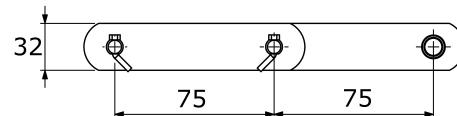
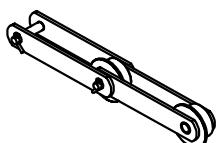
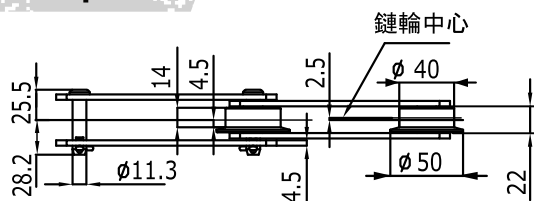
R



S



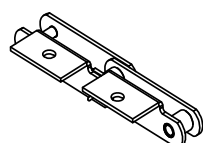
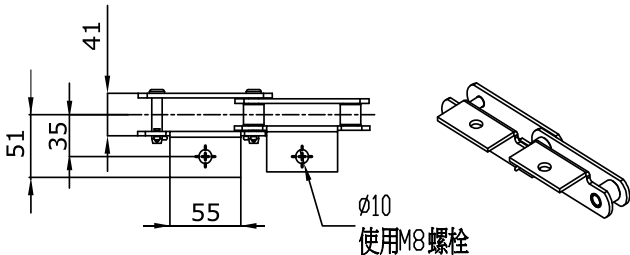
F



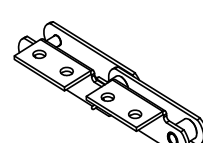
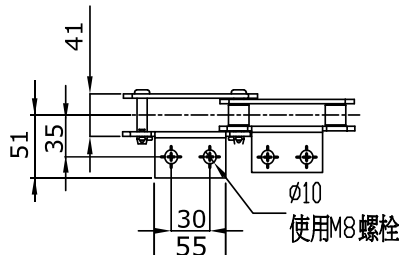
## 5 配件形式

### ● A1 / A2 / K1 / K2 配件(公制)

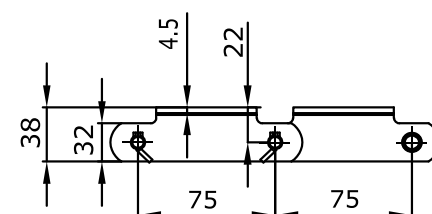
1LA1



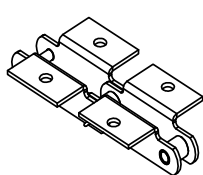
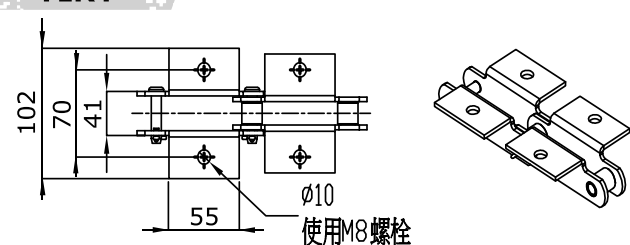
1LA2



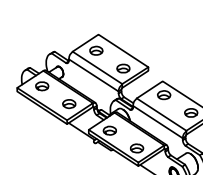
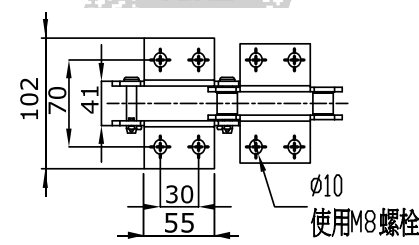
前視圖



1LK1



1LK2

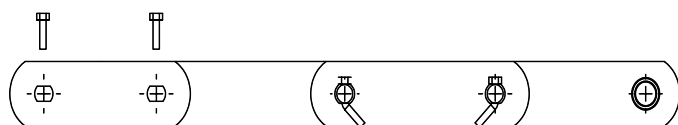


## 6 記號說明

### ● 鏈條兩側尾端記號說明

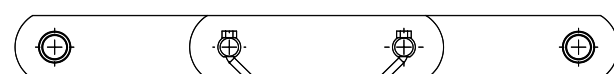
JN

一邊外目、一邊內目



NN

雙邊內目



# RF05100 鍊條及標準配件

• 以下提供本產品完整規格說明及訂購資訊

## 1 訂購資訊

標示例:

RF05100	R	SC	1L	A2	400L	JN
尺寸	滾子型式	材料規格	配件安裝型式	配件	鏈結數	尾端記號

## 2 規格資訊

資訊表:

### 產品重量參數總覽

尺寸 / SIZE	節距(P) mm	無配件重量(淨重-kg/m)			A配件重量(kg/個)
		S	R	F	
RF05100	100	3.7	5.0	5.2	0.8

## 3 材料係數

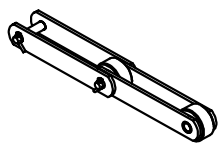
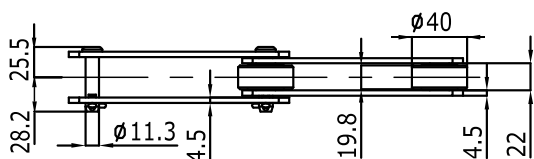
### 材料規格代號及抗拉強度

材料規格代號	SC(長備品)	SCZP	SCH	SCHZP	SS	SSH
鍊片	碳鋼HT	+電鍍鋅	合金鋼HT	+電鍍鋅	SUS304	SUS304
軸心、套管、滾子	合金鋼HT	+電鍍鋅	合金鋼HT	+電鍍鋅	SUS304	SUS410HT
最小抗拉強度 kgf	12000		15400		6600	6600

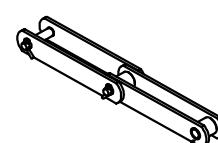
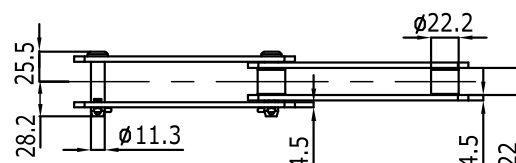
## 4 滾子形式

### R / S / F 型滾子(公制)

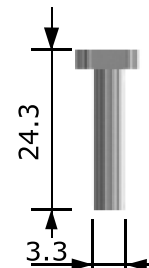
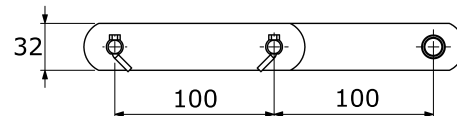
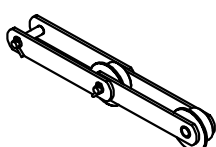
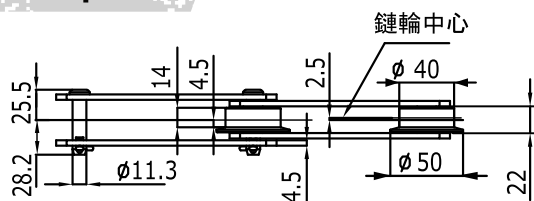
R



S



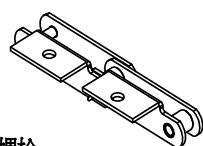
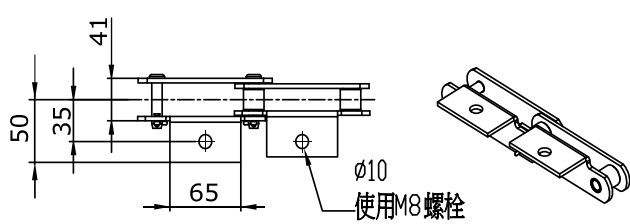
F



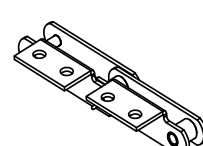
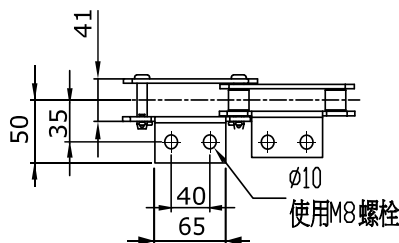
## 5 配件形式

### A1 / A2 / K1 / K2 配件(公制)

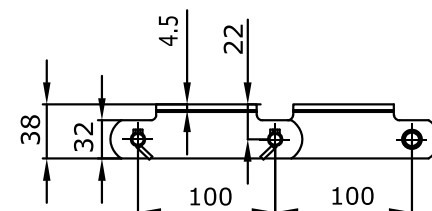
1LA1



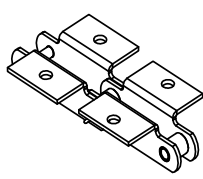
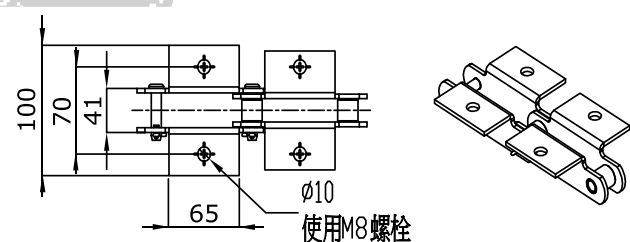
1LA2



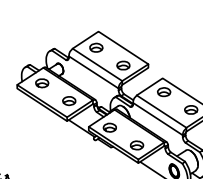
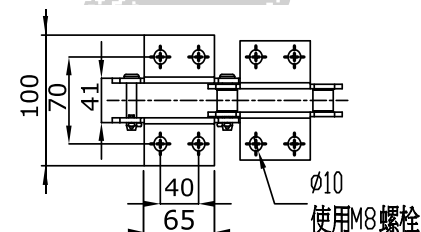
前視圖



1LK1



1LK2

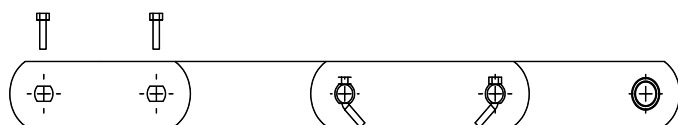


## 6 記號說明

### 鏈條兩側尾端記號說明

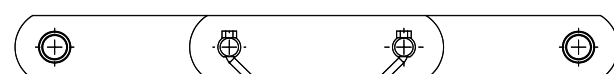
JN

一邊外目、一邊內目



NN

雙邊內目



# RF05125 鍊條及標準配件

## 以下提供本產品完整規格說明及訂購資訊

### 1 訂購資訊

標示例:

RF05125	R	SC	1L	A2	400L	JN
尺寸	滾子型式	材料規格	配件安裝型式	配件	鏈結數	尾端記號

### 2 規格資訊

資訊表:

#### 產品重量參數總覽

尺寸 / SIZE	節距(P) mm	無配件重量(淨重-kg/m)			A配件重量(kg/個)
		S	R	F	
RF05125	125	3.4	4.5	4.6	0.9

### 3 材料係數

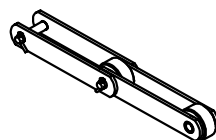
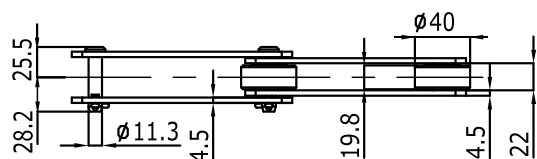
#### 材料規格代號及抗拉強度

材料規格代號	SC(長備品)	SCZP	SCH	SCHZP	SS	SSH
鍊片	碳鋼HT	+電鍍鋅	合金鋼HT	+電鍍鋅	SUS304	SUS304
軸心、套管、滾子	合金鋼HT	+電鍍鋅	合金鋼HT	+電鍍鋅	SUS304	SUS410HT
最小抗拉強度 kgf	12000		15400		6600	6600

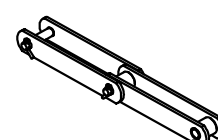
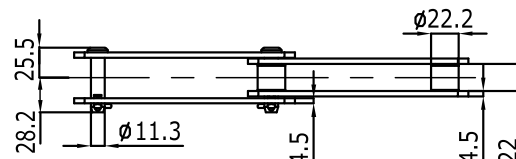
### 4 滾子形式

#### R / S / F 型滾子(公制)

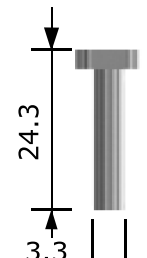
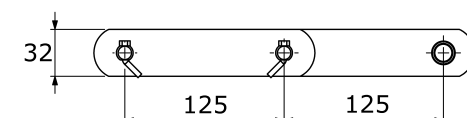
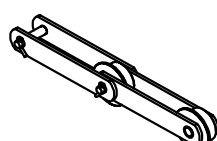
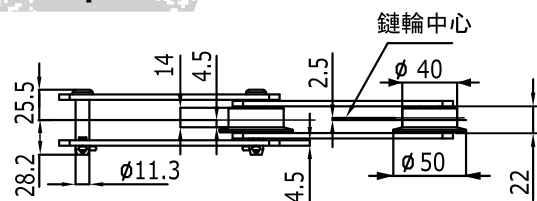
##### R



##### S



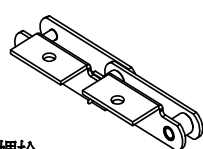
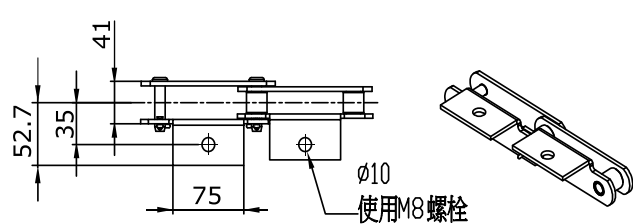
##### F



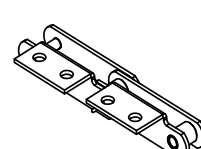
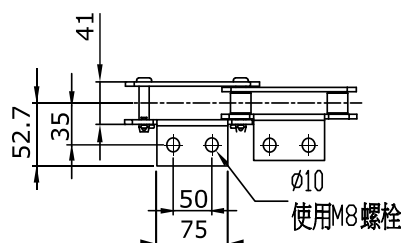
### 5 配件形式

#### A1 / A2 / K1 / K2 配件(公制)

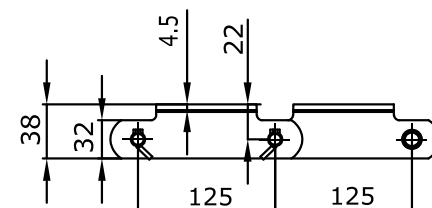
##### 1LA1



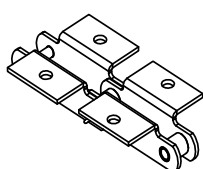
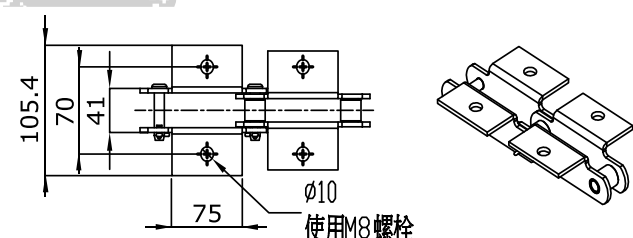
##### 1LA2



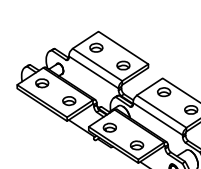
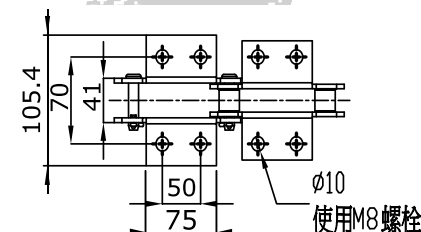
##### 前視圖



##### 1LK1



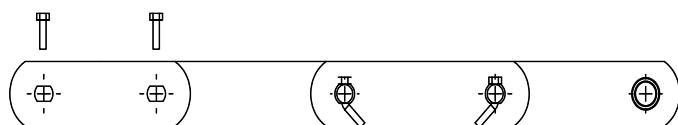
##### 1LK2



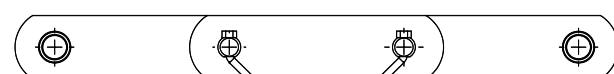
### 6 記號說明

#### 鏈條兩側尾端記號說明

JN  
一邊外目、一邊內目



NN  
雙邊內目



# RF05150 鍊條及標準配件

• 以下提供本產品完整規格說明及訂購資訊

## 1 訂購資訊

標示例:

RF05150	R	SC	1L	A2	400L	JN
尺寸	滾子型式	材料規格	配件安裝型式	配件	鏈結數	尾端記號

## 2 規格資訊

資訊表:

### 產品重量參數總覽

尺寸 / SIZE	節距(P) mm	無配件重量(淨重-kg/m)			A配件重量(kg/個)
		S	R	F	
RF05150	150	3.2	4.2	4.3	0.11

## 3 材料係數

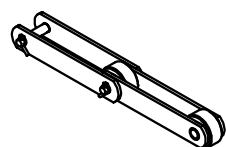
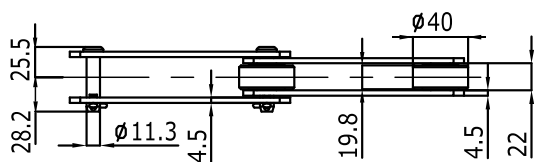
### 材料規格代號及抗拉強度

材料規格代號	SC(長備品)	SCZP	SCH	SCHZP	SS	SSH
鍊片	碳鋼HT	+電鍍鋅	合金鋼HT	+電鍍鋅	SUS304	SUS304
軸心、套管、滾子	合金鋼HT	+電鍍鋅	合金鋼HT	+電鍍鋅	SUS304	SUS410HT
最小抗拉強度 kgf	12000		15400		6600	6600

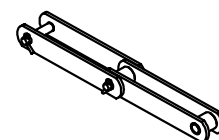
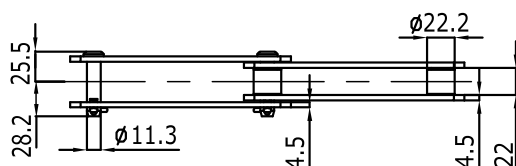
## 4 滾子形式

### R / S / F 型滾子(公制)

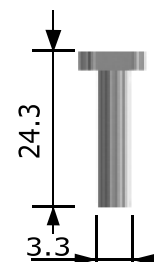
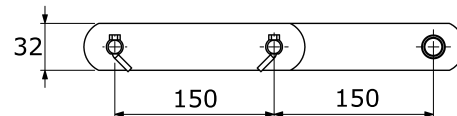
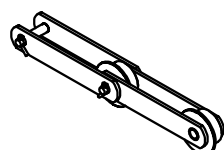
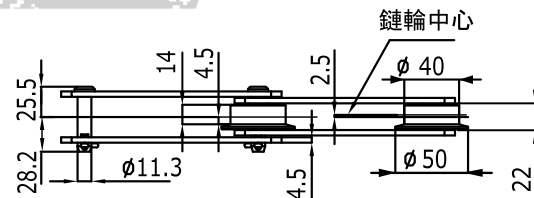
#### R



#### S



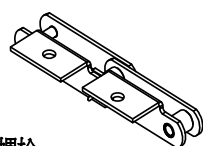
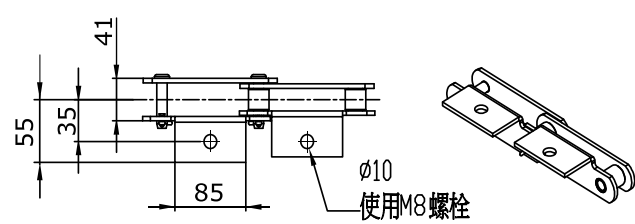
#### F



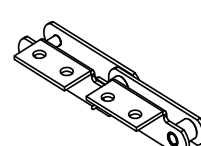
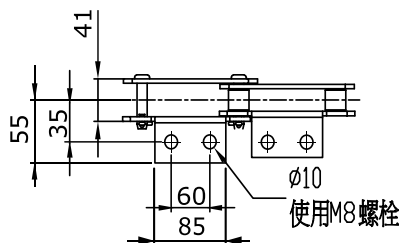
## 5 配件形式

### A1 / A2 / K1 / K2 配件(公制)

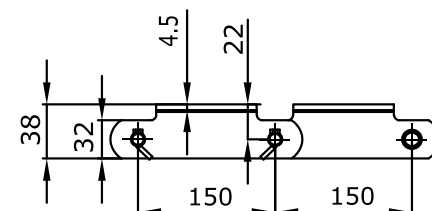
#### 1LA1



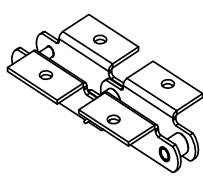
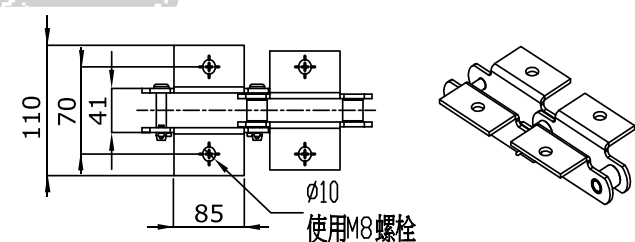
#### 1LA2



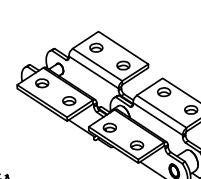
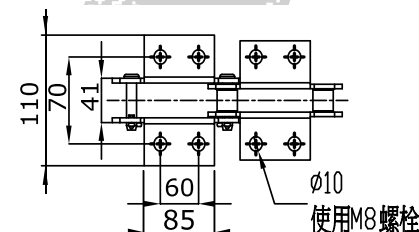
#### 前視圖



#### 1LK1



#### 1LK2

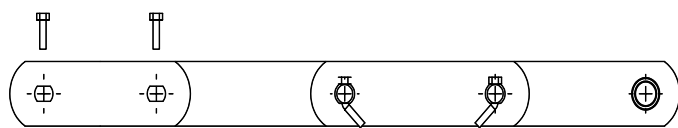


## 6 記號說明

### 鏈條兩側尾端記號說明

JN

一邊外目、一邊內目



NN

雙邊內目

